



**ARMOR**<sup>®</sup>  
WINDOWS & DOORS

CLASS. STRENGTH. SECURITY

Our 180° Multi-point lock, creates two lock points below & above hardware for a tight closure. No interference to your window coverings.

CONTEMPORARY DESIGN.

QUALITY PERFORMANCE.

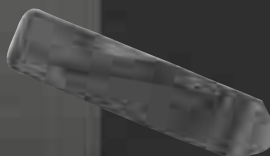
COMPLIMENTS YOUR HOMES INTERIOR FINISHES.

## FINISHES

### COLOURED (painted finish)

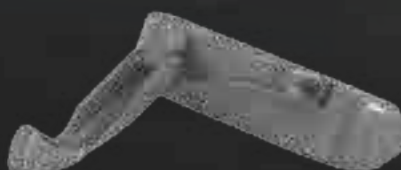


1 Copper



2 Faux Oil Rubbed Bronze

### DESIGNER FINISH (actual metal finish)



1 Oil Rubbed Bronze



2 Antique Chrome



3 Satin Nickel

## SPECIFICATIONS

- Requires 33% less effort to operate
- Effortless operation
- Meets the most stringent cycle testing
- Hardware strength & quality enhances window security to your home.

### SERIES

Platinum Casement & Awning  
1 3/8" Casement & Awning

### MATERIAL

Die-Cast Zinc Operator

### COATING

E-Gard Hardware Coating

### WARRANTY

Lifetime Warranty

### CERTIFICATION

AAMA 901-07